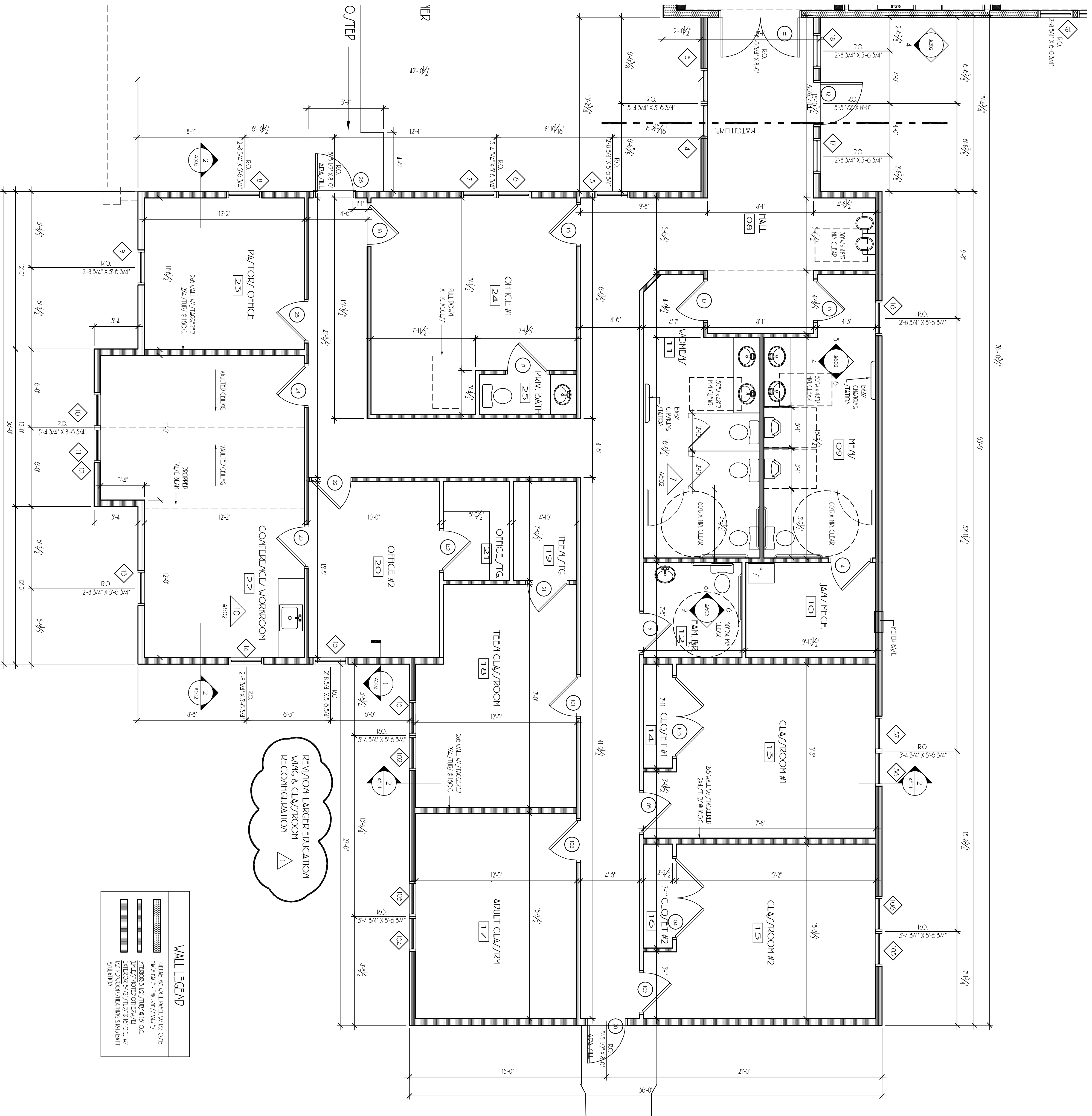


RM #	ROOM NAME	FLOOR MATL	ROOM SQ. FT.	Ceiling	Notes
08	HALL	CARPET	888 SF	GRP. BO. 9'-0"	---
09	MENS	WCT	164 SF	GRP. BO. 9'-0"	---
10	JAN./MECH	WCT	72 SF	GRP. BO. 9'-0"	---
11	WOMENS	WCT	139 SF	GRP. BO. 9'-0"	---
12	FAM. BR.	WCT	33 SF	GRP. BO. 9'-0"	---
13	CLASSROOM #1	CARPET	214 SF	GRP. BO. 9'-0"	---
14	CLOSET #1	CARPET	17 SF	GRP. BO. 9'-0"	---
15	CLASSROOM #2	CARPET	214 SF	GRP. BO. 9'-0"	---
16	CLOSET #2	CARPET	17 SF	GRP. BO. 8'-6"	---
17	ADULT CLASSRM	CARPET	191 SF	GRP. BO. 9'-0"	---
18	TEEN CLASSROOM	CARPET	196 SF	GRP. BO. 9'-0"	---
19	TEEN SIG.	CARPET	36 SF	GRP. BO. 9'-0"	---
20	OFFICE #2	CARPET	134 SF	GRP. BO. 9'-0"	---
21	OFFICE SIG.	CARPET	38 SF	GRP. BO. 8'-6"	---
22	CONFERENCE/WORKROOM	CARPET	315 SF	GRP. BO. 12'-3" 1/2"	---
23	PASTORS OFFICE	CARPET	140 SF	GRP. BO. 9'-0"	---
24	OFFICE #1	CARPET	232 SF	GRP. BO. 9'-0"	---
25	PRIV. BATH	WCT	23 SF	GRP. BO. 9'-0"	---



WALL LEGEND	
[Symbol]	PERFOR. WALL BRK. W/1/2" O.B.
[Symbol]	EXTER. TYPICAL WALL
[Symbol]	INTERIOR 3/4" TYP. 8" O.C.
[Symbol]	INTERIOR 1/2" TYP. 8" O.C.
[Symbol]	INTERIOR 1/2" TYP. 8" O.C. W/ 1/2" RIBBED JOINTS & 3/4" BATT INSULATION

EDUCATION WING FLOOR PLAN

CHAPEL IN THE PINES

CHAPEL AND EDUCATION BUILDINGS

CHATHAM COUNTY, NORTH CAROLINA

SHAW DESIGN ASSOCIATES, P.A.

DESIGN PLANNING GRAPHICS

1800 W. HUNTER STREET #8

CHATHAM COUNTY, NC 28511

(919) 491-5258

(919) 491-5065 (F)

REGISTERED ARCHITECT

STATE OF NORTH CAROLINA

9923

REGISTERED PROFESSIONAL ENGINEER

STATE OF NORTH CAROLINA

3117

REVISIONS

R1: 6-30-11 - ENLARGED EDUCATION WING

DATE: 3/17/2011

DRAWN: [Blank]

FILE #: 1023

A103

SHEET OF